

RDXA General Meeting-4/19/11

# V31AM Contest Expedition

Ken Boasi, N2ZN

# Basic info

- March 2-8, 2011
- Entry in the ARRL DX SSB contest as SOAB HP.
- CW and digital outside the contest
- Effort to cover WARC and JA/EU outside the contest
- Operate from V31MD shack in Placencia.

# How it happened

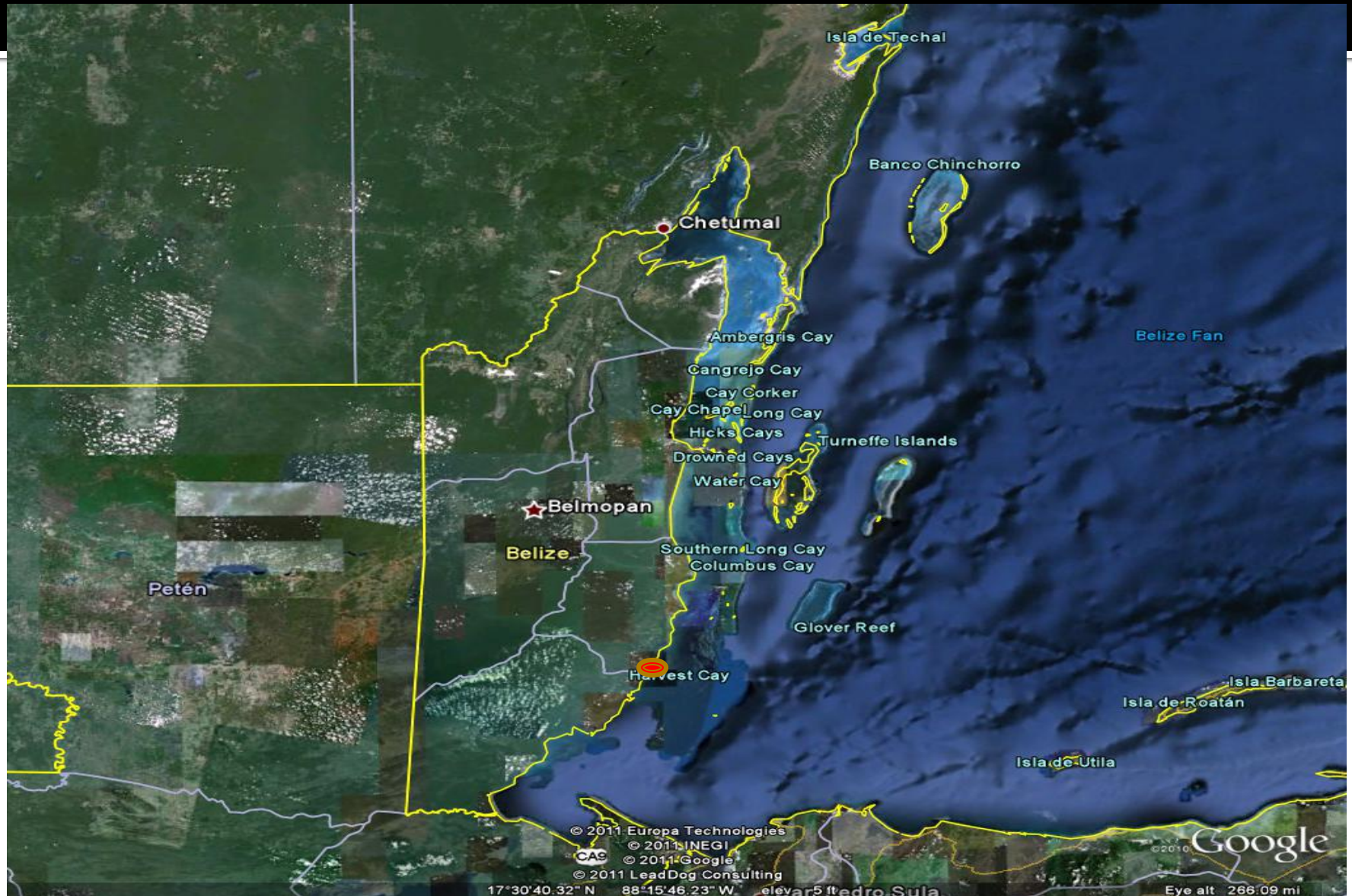
---

- Everyone wants to be DX
- Stories about huge rates and big scores.
- ARRL DX SSB contest is the best!
- Good time for me to do it.

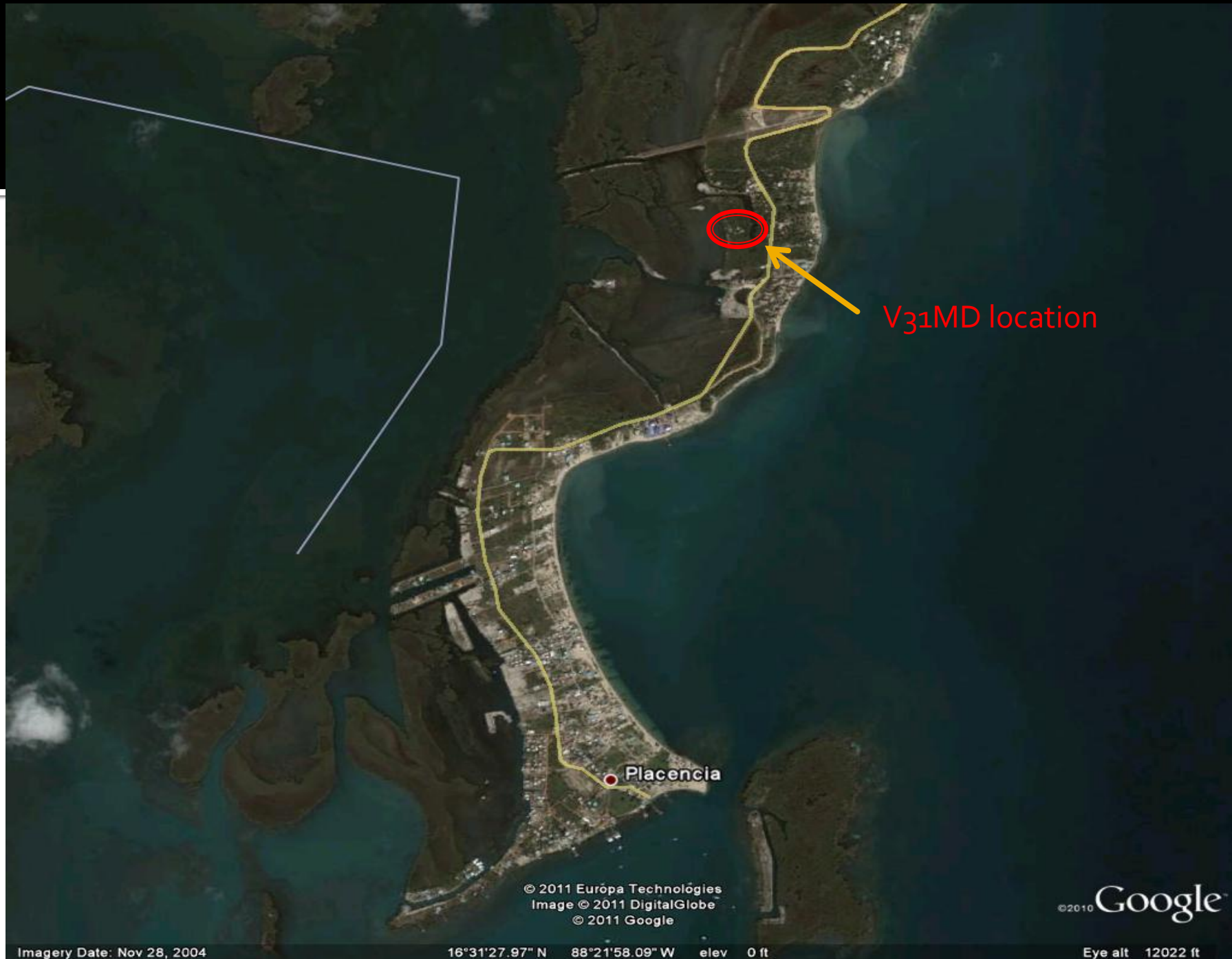
# How it happened

- Early December-checked out different rental shacks for availability (VP5JM, V26B, etc).
  - All booked.
- V31MD-cheaper, good accommodations, easy to get to, decent station.
  - Available!
- Planned to get other ops and be S/O as worst case scenario, but...

# Placencia, Belize







V31MD location

Placencia

© 2011 Európa Technológiás  
Image © 2011 DigitalGlobe  
© 2011 Google

© 2010 Google™

Imagery Date: Nov 28, 2004

16°31'27.97" N 88°21'58.09" W elev 0 ft

Eye alt 12022 ft

# Getting There

- Flight: Rochester-Atlanta-Belize City.
- Then, fly from Belize City to Placencia (about 1½ hour).
  - 1 stop in Dangriga.



# Entrance to Palmetto Place





# V31MD Shack





# V31MD Shack



# V31MD Shack





# Guesthouse





# Guesthouse





# Antennas



# Antennas





# Antennas





# Station

- TS-850 and Ts-690
- 2L quad for high bands; verticals for low bands.
- No RX antennas; no amplifier (burned up a few weeks before).
- 4L 6m yagi.

# Placencia

---

- Warm, sunny, sandy peninsula.
- Airport, Main St, and the sidewalk.
- Lots of places to eat, drink, tour, etc.
- Not really a tourist trap
- Everything is locally produced.

# Placencia





# Placencia





# Placencia



# Placencia





# Placencia





# Placencia





# Non contest activity

- Try to focus on non SSB modes and non contest bands before contest.
- Try to work non NA stations, especially JA
- High bands were FB throughout entire stay
  - 10m open each day to W1, W2.
- 6m not really open; heard some XE and SA.

# Non contest activity

Band	Mode	QSOs
1.8	CW	1
3.5	CW	9
5	USB	5
7	CW	147
7	PSK31	1
14	CW	12
14	USB	8
18	CW	109
18	USB	1
21	CW	112
24	CW	562
24	PSK31	16
24	USB	104
28	CW	123
28	FM	8
28	PSK31	7
28	USB	15
Total		1240



# Contest activity

- Operate 40+ hours; as much as possible.
  - Ended up being 42
- If conditions are good, spend time on 10 meters.
  - 15 & 20 were certain to be good based on conditions beforehand.
- 40 & 80-would be open, but not sure how much signal I would have.

# Contest activity

- Operate split on 40.
  - Better chance of a clear frequency for TX & RX- better chance of being heard with LP.
  - 7.125 to 7.200 segment is madness, and 7.200 up still has SW BC.
  - TX outside of USA band and listen up.
- Not sure how 160 would work-antenna not working correctly.



# Contest Activity

- Start on 20, stay as long as possible, then go to low bands.
- Hop back and forth between 40 & 80 depending on rate.
- Sleep when USA-EU path starts opening and peaks.
  - Followed this pattern both nights.

# Bandchanges & Strategy

- Be on 20 at 0000z, lowbands, 20, 10, 15, 20.
- Highest rate: 320/hour on 15 meters from 1857z to 1956z on day 1.
- 2<sup>nd</sup> highest: 263 (clock hour) at 1600z on day 1.
- Talk fast, stay awake!
- Try to always grab a full call from pileup.
- Use phonetics only if unsure of call.
  - Also, use phonetics more if you are weak (80m).



# Bandchanges & Strategy

- Sign call frequently; not everyone is assisted!
  - After every QSO, if not too many callers.
  - Every 2 or 3 QSO's if there are lots of callers.
  - Did not want any long (several minute) stretches of non ID'ing.
- Use DVK as much as possible.

# Highlights

- Many RDXA members calling in!
- Working so many familiar calls.
- Hearing the loud signals from big stations that are usually the competition (LR, LPL, etc.).
- High rates.
- 62 mults out of 63 on 15 meters (missed NU).
  - NWT, YT, NL all called in right in a row!
- High bands played real well.

# Highlights

- Station worked perfectly-no hardware issues.
- No computer issues.
- Cool WX during the day in the shack.
- Giving many people (mostly new hams) a new DXCC country or new band country (found this out afterwards).
- Courteous operators.
- No frequency fights (had a few “net problems” though).



# Lowlights

- Not too many, but always some
- No 160 QSO's.
- Low rate hours in 0400z and 0700z hours on Sunday AM.
  - "Operator Issues"
- Only operated 42 hours; wanted to have 44 or 45.
- Nearly got locked out of shack before contest! (not really a lowlight, but a big error on my part).

# Bottom Line

<u>Band</u>	<u>Q</u>	<u>M</u>
160	0	0
80	452	52
40	821	56
20	1450	59
15	1405	62
10	1220	54
Total	5348	283
	<b>4,525,170</b>	

# World SOAB LP Ranking

- HI3TEJ:  $5697/309=5,281,119$
- V31AM:  $5348/283=4,525,170$
- J88DR:  $4881/288=4,216,320$
- VP9/W6PH:  $4537/271=3,688,581$
- J7Y:  $3640/248=2,708,160$



# Day 1 Rate Sheet

Hour	160	80	40	20	15	10	Rate	Total	Pct
0	0	0	0	219	0	0	219	219	4
100	0	2	0	117	0	0	119	338	2.2
200	0	0	135	0	0	0	135	473	2.5
300	0	0	96	0	0	0	96	569	1.8
400	0	128	15	0	0	0	143	712	2.6
500	0	59	25	0	0	0	84	796	1.6
600	0	0	96	0	0	0	96	892	1.8
700	0	28	38	0	0	0	66	958	1.2
800	0	29	4	0	0	0	33	991	0.6
900	0	0	50	0	0	0	50	1041	0.9
1000	0	47	2	0	0	0	49	1090	0.9
1100	0	44	0	0	0	0	44	1134	0.8
1200	0	0	0	0	0	0	0	1134	0
1300	0	0	0	0	0	0	0	1134	0
1400	0	0	0	145	0	0	145	1279	2.7
1500	0	0	0	68	0	0	68	1347	1.3
1600	0	0	0	0	0	263	263	1610	4.9
1700	0	0	0	0	7	119	126	1736	2.3
1800	0	0	0	0	210	0	210	1946	3.9
1900	0	0	0	0	313	0	313	2259	5.8
2000	0	0	0	0	209	0	209	2468	3.9
2100	0	0	0	0	178	0	178	2646	3.3
2200	0	0	0	170	0	8	178	2824	3.3
2300	0	0	0	229	0	0	229	3053	4.2
Day 1 Total	0	337	461	948	917	390	3053		

# Day 2 Rate Sheet

Hour	160	80	40	20	15	10	Rate	Total	Pct
0	0	0	0	147	0	0	147	3200	2.7
100	0	0	56	0	0	0	56	3256	1
200	0	0	80	0	0	0	80	3336	1.5
300	0	0	89	0	0	0	89	3425	1.6
400	0	6	27	0	0	0	33	3458	0.6
500	0	20	44	0	0	0	64	3522	1.2
600	0	1	47	0	0	0	48	3570	0.9
700	0	4	17	0	0	0	21	3591	0.4
800	0	51	0	0	0	0	51	3642	0.9
900	0	33	0	0	0	0	33	3675	0.6
1000	0	0	0	0	0	0	0	3675	0
1100	0	0	0	0	0	0	0	3675	0
1200	0	0	0	0	0	0	0	3675	0
1300	0	0	0	0	0	0	0	3675	0
1400	0	0	0	77	0	0	77	3752	1.4
1500	0	0	0	29	0	64	93	3845	1.7
1600	0	0	0	0	0	193	193	4038	3.6
1700	0	0	0	0	0	230	230	4268	4.3
1800	0	0	0	0	0	188	188	4456	3.5
1900	0	0	0	0	0	155	155	4611	2.9
2000	0	0	0	0	186	0	186	4797	3.4
2100	0	0	0	0	169	0	169	4966	3.1
2200	0	0	0	17	133	0	150	5116	2.8
2300	0	0	0	232	0	0	232	5348	4.3
Day 2 Total	0	115	360	502	488	830	2295		
Contest Total	0	452	821	1450	1405	1220	5348		

# Stats

Gross QSO's=5408

Dupes=60

Net QSO's=5348

Unique callsigns worked = 3355

The best 60 minute rate was 320/hour from 1857 to 1956

The best 30 minute rate was 334/hour from 1905 to 1934

The best 10 minute rate was 360/hour from 0011 to 0020

The best 1 minute rates were:

8 QSO's/minute 2 times.

7 QSO's/minute 25 times.

6 QSO's/minute 122 times.

5 QSO's/minute 189 times.

4 QSO's/minute 265 times.

3 QSO's/minute 370 times.

2 QSO's/minute 420 times.

1 QSO's/minute 470 times.

There were 24 bandchanges and 3 (0.1%) probable 2nd radio QSO's.



# Top 10 Mults Worked

Mult	160	80	40	20	15	10	Total	Pct
NY	0	33	52	92	77	104	358	6.6
CA	0	35	79	87	62	92	355	6.6
PA	0	32	49	79	65	84	309	5.7
TX	0	25	46	73	101	10	255	4.7
OH	0	17	27	57	69	71	241	4.5
NC	0	16	20	59	74	40	209	3.9
VA	0	15	24	50	58	61	208	3.8
IL	0	6	31	52	61	52	202	3.7
NJ	0	14	32	44	45	53	188	3.5
FL	0	28	52	90	14	1	185	3.4

# Rarest Mults Worked

Mult	160	80	40	20	15	10	Total
NS	0	0	0	4	6	1	11
MB	0	1	1	4	3	1	10
SK	0	0	0	3	3	2	8
NB	0	0	2	3	1	1	7
NF	0	1	1	1	3	0	6
DC	0	1	1	1	2	1	6
PEI	0	1	1	2	1	0	5
YT	0	0	0	0	1	0	1
LB	0	0	0	0	1	0	1
NWT	0	0	0	0	1	0	1

# Multiband QSO's

---

1 band	2290
--------	------

2 bands	526
---------	-----

3 bands	269
---------	-----

4 bands	151
---------	-----

5 bands	119
---------	-----

6 bands	0
---------	---



# Post contest

---

- Send log in.
- Post to 3830.
- Watch WUHF news at 10 (more snow!).
- Bed.

# Day after contest

- Pack.
- Visit town, “tourist” stuff.
- Work a bit more radio (JA on 12 & 10).
- Break down computer, upload log to log search page ([clublog.org](http://clublog.org)).

# 2 days after contest

---

- Fly home
  - Placencia-Dangriga-Belize City-Atlanta-ROC.
- Home at midnight, into bed!



# Misc.

---

- QSL V31AM via N2ZN
- Log is on LoTW.
- Log search at [clublog.org](http://clublog.org)
- Info on V31MD QTH: [www.wishwilly.net](http://www.wishwilly.net)

RDXA General Meeting-4/19/11

# V31AM Contest Expedition

Ken Boasi, N2ZN