

Rochester

DX

association,
inc.

rdxa.com



RDXA General Holiday Dinner

This month we will get
together at Nick's Sea
Breeze Inn, 4581 Culver
Rd - near the entrance to
Sea Breeze Park.

Hope to see you all
there!

December 15th

3rd Tuesday of the month

Note we will be back at the EOC in
January.

Upcoming DX Operations:

Dec 1, 2009-May 1, 2010 Willis I: **VK9WBM**

Dec 3, 2009-Mar 3, 2010 Afghanistan: **T6LC**

Dec 10-20, 2009 Honduras: **HR2**

Dec 10, 2009-Jan 3, 2010 Gambia: **C56SMT**

Dec 18-20, 2009 St Lucia: J68

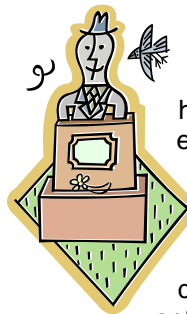
Dec 27, 2009-Jan 1, 2010 Ogasawara: **JD1**

Dec 28, 2009-Jan 3, 2010 Madagascar: 5R8HX

Dec 30, 2009-Jan 5, 2010 Costa Rica: TI7XX

Information courtesy of:

<http://www.ng3k.com/Misc/adxo.html>



The Podium

Paul Mackanos

Well, now that the big FREEZE and WIND is here, I certainly hope all of your antennas have stayed up so you can work all of the elusive DX that is out there. It was nice to see a warning on the reflector from RTTY RICK about lowering your crank-ups before the big winds hit. Both RTTY RICK and I know what happens if you don't. We both lost our crank-ups and the antennas on them many years ago due to BIG WINDS. With that said, I must have the crank-up at the camp installed right, along with all 6 of the guy wires, as it is Friday afternoon as I write this, and I am logged into the remote computer and have been working some DX on 20 cw today, and turning the beam. That is a GOOD sign. Hihi.

Merry Christmas, Happy Hanukah, or whatever your religion (or lack of one) celebrates, I wish each and every member of RDXA a very HAPPY and SAFE holiday season, and may you fill your log with all of those missing DX entities. (I know Christmas Island was on the other night, maybe they will be on again! Hihi)

Our annual Holiday Get-Together Dinner will be on Tuesday the 15th, Paul K2FX has set that all up, I hope to see you all there.

What a year RDXA has had, many training activities from the AWA station, a GREAT Field DAY showing, sponsoring the NY QSO Party, etc, etc, etc. This is a great club and we all get together and share our experiences, let's keep up the good work and friendship and fun.

See you at the Holiday Dinner on Tuesday.

73 de Paul K2DB

What I want Santa to leave me

(Assorted)

N2ZN - put me down for many, many sections of Rohn 25 or 45 tower, and a pair of late 70s/early 80s Alphas.

AF2K - I want Santa to leave me twenty-six QSL's from the Grid Squares I need in order to close the Worked / Confirmed gap on 50 MHz.

K2RNY - Santa: I want an AMQRP Micro908 antenna analyzer. I've been a real good ham, worked contests, posted scores, operated mostly CW and worked a lot of DX stations and hope you will be able to get me one this year.

N2BEG - how about peace on earth? naaaaa, screw that, I want a K3!

K2CS – For Gayle to get better

K2SI - A revised antenna code in the Town of Ogden.

WB2HJV - I would like Santa to leave me one full, properly chilled, fresh case of the malty and spicy Bavarian Schneider Weisse Beer *The Beer of Champion DXers!*

N2WK - A tower Climber to fix problems on my towers 73, and Merry Christmas,

A12N - SPE Expert 1K-FA Linear amp

K2DB - What I need is time to get my remote control of the computer back on DTMF tones and relays. I have the wires, expertise, but just have not had any time to get it installed and working correctly. That's what I need for Christmas hihi

N2CK – I'm not fussy - an all band, legal limit output amp (and the time to use it!).

ARRL 160M Soapbox - Assorted contributors
Call: W2CCC Class Low/Single Total Score - 93,093

Too many hours; TS-440, 160m dipole

Worked almost everything I heard (get the BEVERAGES UP), doubled last year's score, bands in much better shape. unreal signals, dx 40 over rom the caribbean. only 18 deg and 2" of snow this year at w2ccc.

The triple letters help (they generally get 2 of them), missed rx and ja like w2fu :-)

Call: K2DB Class Single/Low Total Score – 12408
QTH NNY (where else); time 3.13 hours.
I want to apologize to all who were calling when RF got into my DSL modem and I had N1MM set to auto CQ. I was running remotely from my nice warm office in Rochester, NY, and the modem disconnected me from the internet and I could not get the connection back on for a few minutes. Yes, there was a big pile-up when I got it fixed, maybe because it was for NNY? hihi. For some reason, running 100 watts was getting into the modem. I ended up lowering my power to 25 watts, and that would not interfere with the modem. Running only 25 watts in this contest is a big challenge, but we had fun anyway. I was totally surprised that I worked every station that I called, some were weak and took some time to get thru, but I guess having fun is what it is all about. I had to call the neighbor once, before I got it all straightened out, as I

was totally disconnected from the internet and the computer went down. Had to have the neighbor go over and turn off the main power, wait 15 seconds and turn it back on again. It's a good thing I have the computer bios set to turn it back on when it loses power. hihi. Anyway, more DTMF tones and relays are needed to get this thing back on line properly. Thanks to all who worked me, and I had a lot of "finally NNY", especially from NN2L who is in NNY. hihi. Contesting is FUN, FUN, and sometimes a real challenge. 73 de Paul K2DB

Call: N2ZN Class Single/Low Total Score – 126,197

Operating time – 11 hours, SO2R

A very part time effort to test out new hardware to see how it plays. I guess it did OK. Never had any DX stations call me in previous years-this year I had a fair number of EU call while running. I guess the amount of DX you work is directly proportional to the amount of radial wire you have on the ground.

Put up beverage to EU on Saturday afternoon. Nice to have it for the second half. Works great!

Used the second radio only as a spotting receiver to fill the bandmap up while running. Only have one TX antenna on 160 and can't share to both radios yet. Also, no Beverage sharing yet, so a 20 meter dipole became the RX antenna for the second radio.

Split the time I was on between running stations and DXing, seeing how things were working and trying to find last two states for 160 WAS (got them both, WY and ID). Found K0TO in the middle of heavy QRM and must have drove him nuts for about 10 minutes trying to pull me out. Finally worked him for state #50. After that, I had two other ID call me while running, naturally. Did not work ND, MS, NL, NWT, SK, or SDG.

2x FT-1000MP Mark 5

Sloped vertical with 21 100' radials (need more) 560' beverages to NE, SW; 700' beverage to SE.

Call: W2FU Class M/S High Power Total score 584,915

K2TJ and K0SM did all the heavy lifting. I let them sleep during the day. Sorry we missed UA9 and a few JA that called in Sun Morning that we didn't hear. Will work on that b4 CQWW. Great Contest Jeff

Call: N2WK Class M/S High Power Total Score 87,044

A part time effort all S&P w/cluster. To many other things going on to play full time. Thanks for all the Q's Wayne

K2DB 160 meter ARRL CW woes

K2DB

I decided that I had a few hours of free time, so I decided to work the ARRL 160 Meter CW contest from the remote station. I logged into the remote computer and set up N1MM for the contest. Hit the "tune" button to use the auto antenna tuner to make sure all is ok on the 160 meter dipole, and I got disconnected from the remote computer. Oh well, that happens once in a while, so I log back in, set up Skype to get my audio feeding back to the computer and all seemed ok, I searched and pounced for a few minutes, and got some weird delays in the audio (I

normally do not get any delays). This was discouraging, as it made making the qso's difficult. Then another disconnect; what the heck is happening? I log back in again, and notice that every time I transmit, things get slow, but without transmitting, all is OK, everything seems normal. I decide to CQ, as then I can control the pile-ups and the timing of the qso's. This was a big mistake, as I had set the AUTO CQ on N1MM. Guess what happened? Yep, I got stuck in the auto CQ mode, and lost my keyboard control, I could not answer anyone, and all I could hear was my CQing and the stations answering me. OOPS! I manually disconnect, then re-connect and I get the auto CQ to stop, then I work a few stations, but with big delays, then another disconnect. Big problem now, not only did I get disconnected, but I lost the connection to the computer. This meant that I needed to re-boot the computer, and I couldn't do it remotely. So here is the apology and what I had to do:

I want to apologize to all who were calling when RF got into my DSL modem and I had N1MM set to auto CQ. I was running remotely from my nice warm office in Rochester, NY, and the modem disconnected me from the internet and I could not get the connection back on for a few minutes. Yes, there was a big pile-up when I got it fixed, maybe because it was for NNY? hihi. For some reason, running 100 watts was getting into the modem. I ended up lowering my power to 25 watts, and that would not interfere with the modem. Running only 25 watts in this contest is a big challenge, but we had fun anyway. I was totally surprised that I worked every station that I called, some were weak and took some time to get thru, but I guess having fun is what it is all about. I had to call the neighbor once, before I got it all straightened out, as I was totally disconnected from the internet and the computer went down. Had to have the neighbor go over and turn off the main power, wait 15 seconds and turn it back on again. It's a good thing I have the computer bios set to turn it back on when it loses power. hihi. Anyway, more DTMF tones and relays are needed to get this thing back on line properly. Thanks to all who worked me, and I had a lot of "finally NNY", especially from NN2L who is in NNY. hihi. Contesting is FUN, FUN, and sometimes a real challenge.

73 de Paul K2DB

QSL received via snail mail

N2CK

On November 23rd, I received a letter from Scott, K2CK containing a QSL card for a 40m CW contact with France. He received the card in a Buro pack and took the time to mail it to me! Scott lives in East Greenbush and missed the Rochester hamfest this past year because he was on a Dxpedition to the Bahamas!

Contesting at Cold Brook Contest Club – K2CS

Remember, when all's said and done, a "paper logger" and cw guy will place highly as an **all ssb** team....

What a hobby, Chris w2ccc

For those unbelievers, here is a picture of AF2K computer logging:



And Chris with a microphone – who knew?



Who will be next month's bio ??????

Let's line up Bio's for the rest of the year. I would love to hear how you got started in the hobby and what else do you do in your life (if there is anything besides amateur radio). Send your bio to Dave **N2CK**, the newsletter publisher and see it in print in upcoming months.

DX Report

K2CS

With a fair portion of the "contest season" over, how did you do? As I see it from here, some "interesting" propagation has me believing that we're on the way out of the black hole. Even though the lower band have been spot on.

Just completing the ARRL 160m contest last weekend saw my best effort yet. Bands seemed great (unlike the lightning storm of a few years ago) and what I thought was dismal conditions last year.

Almost everything I heard I was able to work (note to self, get the BEVERAGES UP!).

I couldn't believe some of the signals this weekend, some DX was 40 over. One call on many stations EXCEPT Alaska.

Now only one shy of WAS 160m from W2CCC (where the 160m dipole is). Needed WY also, got 2 in the log this weekend, easy.

Planned my operating time to look for AK. Generally, our sunrise (even though they've been on and loud at dusk).

So, Sunday morning at 5am, NL7 was on, just about 1.834. In the noise to me but was able to hear enough to call him. He worked guys for about 10 minutes and then was gone, don't know if he went QRT of the band dips that quickly, no one was calling.

So, I guess I wait another year, CQWW 160m SSB and CW I have conflicts and working them here on a shorted G5RV.... good luck.

For those thinking we dodged winter, 2" of snow and 18 deg Saturday nite.

CQWW SSB and CW are always fun. Plenty of stuff to fill your logs and always a "surprise" along the way. I've always found that hanging out on 20m at the end of the contest is the way to go. In years past, I've heard VU's, JD's and the like calling CQ with no one answering. Easy pickin's for the 100w crowd.

If you haven't done so already, place your score on our grid, great historical value (I look up my past year's scores often to "draw a line in the sand").

T2G	(20m CW)
FT5GA	(20m SSB)
9K2MU	(30m CW)
5N/LZ1QK	(40m CW)
TX5SPA	(30m CW)
TX5SPA	(20m SSB)
K4M	(17m CW)
P29VR	(17m CW)
T30IW	(40m CW)
9G5TT	(30m CW)
9L7NS	(80m CW)

See you in the pileups.

Best DX es 73,

Chris, K2CS: Atlantic Division DXAC

Contest Calendar

Mark these dates on your calendar:

December 12-13 - ARRL 10M
January 1st – ARRL Straight Key Night
January 2-3 – ARRL RTTY Roundup
January 10 - 11 – NA QSO Party (CW)
January 17 - 18 – NA QSO Party (SSB)
January 23 – 25 – ARRL January Sweepstakes
February 28 – March 1st – NA QSO Party (RTTY)

Remember to put your scores on the RDXA grid and good luck to all.

Propagation 11 years ago

AD5Q's notes
from Cycle 22

Flux Range 128 - 187

November brought us the finest solar conditions to date in the new cycle. Best of all, this occurred on the weekend of the CQWW CW Contest. The flux approached 170 with quiet geomagnetic conditions, and all bands played well except 160. This more than makes up for the low solar activity we found in the SSB portion of the contest. This time, the 10 Meter window to Europe was in excellent shape.

The really high latitude countries were mostly available in the early morning. 10 does close shortly after sunset - just as the band opens for us. The polar region is mostly dark, and we can expect these paths to be difficult on 10 this late in the season. The higher flux does keep them open on 15, and the DX continued to run past noon at good rates. After dark on our end, high latitude openings to Asia can be found just before the band closes. Predictably, these opportunities are better on 15 than on 10.

As night falls over Europe, the MUF along the path drops and the opening moves to lower frequencies. 20 closes up later in the evening, but in the early evening DX paths are open from the northwest around to the southern hemisphere (where 20 is open all night). This is also the way the band closes: from the northwest around to the south. In the early evening we get an opening deep into Asia, and Europe gets an opening to North America in their evening. When the MUF across the Atlantic drops below 14 MHz, propagation begins to peak on 40.

Though 80 & 160 are at their best at the bottom of the sunspot cycle, the MUF on 40 drops below 7 MHz in the winter. Europe works North America in the evening, and in the morning after sunrise. With the higher solar flux, 40 is open to Europe all night - as it was in the contest. It is now the optimum night band. Areas closer to the polar night (e.g. Scandinavia) are workable well past midnight. They call it morning, but the sun is still low in the sky at northern latitudes - extending the lowband opening into the darkness.

20 is not the optimum band for either day or night paths, but works well in the late afternoon, early evening, and morning. You work into other areas of the northern hemisphere that is in these time periods, or into and across the southern hemisphere where the band never closes. It is a good idea to check the morning long path several times per week, because there really is a lot of exotic activity on the band regularly.

<http://www.qth.com/ad5q/>

Forecast of Solar and Geomagnetic Activity

09 December 2009 - 04 January 2010

Solar activity is expected to be predominantly very low with just a slight chance for brief periods of low.

No proton events are expected at geosynchronous orbit.

The greater than 2 MeV electron flux at geosynchronous orbit is expected to be at normal background levels through the period.

The geomagnetic field is expected to be quiet for 9-17 December. An increase to quiet to unsettled levels is expected on 18 December due to a recurrent high speed stream. Quiet levels are expected to predominate for the remainder of the outlook period.

More at: <http://www.sec.noaa.gov/radio/>

RDXA Apparel Update

K1PY

Ran across the RDXA apparel box, and thought I'd update the membership of the few items still available.

Green golf shirt, RDXA patch, with pocket, XL \$17

Green baseball caps (2), RDXA patch \$13.50 each

RDXA Yellow FD National Champion T-shirt, L \$12

Reserve one for yourself as a Holiday gift!

Will have in my car at meetings, etc. Checks payable to RDXA acceptable.

Assorted Internet Links:

K2DB

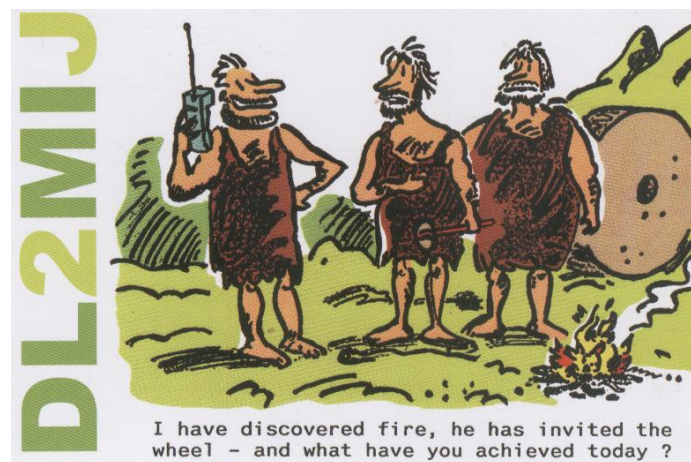
60 Meters <http://60meters.net/>
425 DX News <http://www.425dxn.org>
ARRL <http://www.arrrl.org>
Argentina-LU6EF <http://gacw.co-ip.org>
Arkansas DX Assn <http://www.adxa.org/>
Buckmaster <http://hamcall.net>
Carolina DX Assn (CDXA) <http://www.cdxa.org/>
Central Arizona DX Assn <http://www.cadxa.org>
Cent TX DX/Contest Club <<http://www.ctdxcc.org/>>
CQ Magazine <http://www.cq-amateur-radio.com/>
Chiltern DX Club (CDXC) <http://www.cdxc.org.uk>
Dynamic DX Charterhouse <http://www.ddxc.net/wap>
Delta DX Assoc (DDXA) <http://www.deltadx.net/>
DX Safaris <http://www.africandxsafaris.com>
DX Summit - Cluster <http://www.dxsummit.fi/>
ETDXA (E.Tn.DX Assoc) <http://etdxa.org/>
EUDXF <http://www.eudxf.de/>
F6AJA - QSL Collection <http://lesnouvellesdx.fr/galerieqsl.php>
French DX News <http://LesNouvellesDX.fr>
German DX Foundation <http://www.gdxf.de/>
German DX-News Ltr <http://www.darc.de/referate/dx/fqdxm.htm>
GoList <http://golist.net/>
HIDXA <http://hidxa.com>
INDEXA <http://www.indexa.org>

IOTA Website <http://www.g3kma.dsl.pipex.com>
IRAQI Amateur Rad Soc <http://www.iraqi-ars.org/>
IREF <http://www.islandradio.org>
KP1-KP5 Project <http://www.kp1-5.com>
LADYG <http://www.ladyg.no>
Low-Land DXped. Team <http://www.qsl.net/ldxt>
Magnolia DX Assn. <http://www.mdxa.org>
Mediterraneo DX Club <http://www.mdxc.org>
NCDXF <http://www.ncdxf.org>
NCDXF Beacons <http://www.ncdxf.org/beacons.html>
N. ILL DX Assoc. (NIDXA) <http://www.nidxa.org>
North Jersey DX Assoc. <http://www.njdx.org>
Oceania DX GP(ODXG) <http://www.odxg.org>
OK - DX Contest <http://okomdx.radioamater.cz/>
Postage Information-K9XJ <http://www.windridge.net/personal.htm>
Propagation Data <http://dx.qsl.net/propagation/QSL>
Managers Society <http://www.qsl.net/qslmanagers>
QSL Routes (Germany) <http://www.qslinfo.de>
QSL Manager (Italy) <http://www.ik3qar.it/manager/>
Radio Club of Costa Rica <http://www.ti0rc.org/>
Radio Am. Soc.Thailand <http://www.rast.or.th>
SEDCO - Convention <http://sedco.homestead.com>
Utah DX Assn. (UDXA) <http://udxa.org/>
TVDXA (TnVal DX Assoc) <http://www.tvdxa.com>
Texas DX Society <http://www.tdxs.net>
The DX Notebook <http://www.dxr.org>
Visalia-Int'l DX Convention <http://www.dxconvention.org>
Worldwide Antarctic Pgm <http://www.waponline.it>
W0-DXCC Convention <http://www.w0dxcc.com>
W9-DXCC Convention <<http://www.w9dxcc.com>>

Interesting QSL card

N2CK

I received the following card from DL2MIJ for a 20m CW QSO. You better believe I'll QSL this one!



Hamfest calendar for 2010

K2DB

Lockport (LARA) Saturday, 30 January 2009
BARA Auction, Monday, 15 February 2010
Elmira Winterfest Saturday, 27 February 2010
Lancaster Winter Hamfest Sunday, 14 March 2010
RAWNY Flea Market (Last year Tuesday, 14 April 2009)
Dayton Hamvention Friday/Sunday 14-16 May 2010
Rochester Hamfest Saturday, 5 June 2010
Butler Hamfest (PA) Sunday June 6, 2010
PROS Hamfest – Chaffee (Last year Saturday, 13 June 2009)
GRAM (Batavia / Alexander) Hamfest (Last year Saturday, 1 August 2009)
Lancaster Harvest Hamfest (Last year - 5 October 2008)
Elmira Hamfest Saturday, 25 September 2010

Rochester DX Association

W2RDX

rdxa.com

This Bulletin is the official organ of the Rochester DX Association and is published monthly, September through June. Email your articles, tidbits, ham ads, etc. to Dave, N2CK at the addresses below by the second Tuesday of the month for inclusion in that month's issue.

All those with an interest in amateur radio and DXing and contesting are cordially invited to any meeting and to join RDXA. Meetings are held at 19:30 local time on the 3rd Tuesday of each month, September through June.

President-----Paul Macanos – K2DB/k2db@k2db.org

Vice President-----Paul Kolacki K2FX/
usafpilot@rochester.rr.com

Treasurer-----Irv Goodman – AF2K/af2k@juno.com

Secretary -----Carey Magee – K2RNY/k2rny@frontiernet.net

Board of Directors

Lloyd Caves – N2PU -----n2pu@rochester.rr.com

Doug Stewart – N2BEG -----doug.stewart@ITCMEMS.com

Lynn Bisha – W2BSN -----lbisha@rochester.rr.com

Chris Shalvoy – K2CS-----K2CS/chris@k2cs.net

Appointed Positions

DX Chairman ----- Chris Shalvoy, K2CS

Packet Cluster Sys Op ----- Bob Hunter, NG2P

Webmaster ----- Scott Hoag, K2ZS

Contest Chairman ----- Ken Boasi , N2ZN

Membership Chairman -----Carey Magee, K2RNY

Newsletter Editor ----- Dave Wright, N2CK/N2CK@arrl.net

NG2P Packet Cluster -----144.910 MHz

-----Telnet: ng2p.ham-radio-op.net / Port 7300

Membership Dues can be sent to:

Regular membership - \$20.00

Family Membership - \$5.00

Full Time Student - \$10.00

Carey Magee
69 Fairview Crescent
Rochester, NY 14617

**Any other correspondence to:
Irv Goodman**

Professional Home Inspection



Paul Mackanos – K2DB

92 Schilling Lane

Rochester, NY 14618



800.822.7579

585.223.4230

CARLETTA REALTY

Mike Carletta
Principal Broker

30 Emerald Point
Rochester, NY 14624

585 820 5335

mcarlett@rochester.rr.com
Notary Public

K2OI

*The highest compliment our clients can give is
the referral of their friends and family.*

PAUL I. SNYDER

SNYDER AND SNYDER, LLP
ATTORNEYS

183 EAST MAIN STREET, SUITE 1024
ROCHESTER, NY 14604-1681

TEL: (585) 546-7258

FAX: (585) 546-8332

EMAIL: PSNYDER@FRONTIERNET.NET