



**RDXA General
Membership Meeting
This month's program:**

**New York State QSO Party
presented by:
Paul, K2DB and Rick, W1TY**

**September 15th
3rd Tuesday of the month**

**The Monroe County Emergency
Operations Center (EOC)**

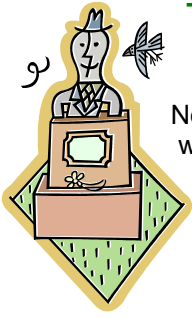
**Media room, right next to the
EOC operations center.**

**1190 Scottsville Road
Exit 17 (Route 383 South) off 390
Media Room**

Upcoming DX Operations:

Sep 4-14, 2009 : Austral Is Callsign: **FO**
Sep 4-14, 2009 : Malta Callsign: **9H3DZ**
Sep 5-26, 2009 : Namibia Callsign: **V5**
Sep 6-18, 2009 : Corsica Callsign: **TK**
Sep 6-27, 2009 : Malta Callsign: **9H9PA**
Sep 8-14, 2009 : West Kiribati Callsign: **T30GM**
Sep 8-17, 2009 : Aruba Callsign: **P41USA**
Sep 8-22, 2009 : Cyprus Callsign: **5B**
Sep 10-15, 2009 : Cyprus Callsign: **5B**
Sep 10-15, 2009 : Madeira Callsign: **CT9**
Sep 10-16, 2009 : Netherlands Antilles Callsign: **PJ4**
Sep 10-22, 2009 : Azores Callsign: **CT8**
Sep 10-25, 2009 : Central Kiribati Callsign: **T31AA**
Sep 10-Nov 13, 2009 : South Korea Callsign: **HL9QST**
Sep 12-20, 2009 : Madagascar Callsign: **5R8UO**
Sep 13-26, 2009 : Azores Callsign: **CT8**
Sep 14-15, 2009 : Corsica Callsign: **TK**
Sep 15-16, 2009 : Fiji Callsign: **3D2G**
Sep 15-Oct 8, 2009 : Glorioso Is Callsign: **FT5GA**
Sep 16-Oct 3, 2009 : Corsica Callsign: **TK**
Sep 17-23, 2009 : Tuvalu Callsign: **T2G**
Sep 18-25, 2009 : Niue Callsign: **ZK2BJ**
Sep 18-25, 2009 : Niue Callsign: **ZK2NX**
Sep 18-30, 2009 : Chatham Is Callsign: **ZL7**
Sep 19-20, 2009 : Aland Is Callsign: **OH0Z**
Sep 19-22, 2009 : Ogasawara Callsign: **JD1**
Sep 19-25, 2009 : Niue Callsign: **ZK2NX**
Sep 22-Oct 21, 2009 : Mayotte Callsign: **TO7RJ**
Sep 24-26, 2009 : Vietnam Callsign: **XV6RRC**
Sep 24-27, 2009 : Fiji Callsign: **3D2G**
Sep 24-27, 2009 : St Pierre & Miquelon Callsign: **FP**
Sep 24-Oct 7, 2009 : Netherlands Antilles Callsign: **PJ2**
Sep 25-Oct 20, 2009 : Cyprus Callsign: **5B**

Information courtesy of:
<http://www.ng3k.com/Misc/adxo.html>



The Podium

Paul Mackanos
K2DB

No article was received before the newsletter was to be posted. Should I receive one, I'll post an updated newsletter.

RDXA Membership News

REMINDER

Membership Dues are being taken for the 2009/2010 season. Please see Carey, K2RNY at the General meeting or send your renewal to his address listed at the end of the newsletter. Please make checks out to RDXA.

This month's bio is from Ed Gable – K2MP

This month we're sharing the biography of Ed Gable, K2MP. Born in Hilton, NY, one night little Eddie was fooling around with the family's Silvertone console radio. Upon turning the BAND switch he was surprised to hear people talking, just chatting over the radio. He asked his father "what's this." His father explained that those were ham radio operators and he would take him to meet one. That weekend his Dad drove South of Spencerport where Ed met a chap with a big booming voice and a transmitter the size of a refrigerator. That chap was Bruce Kelley, W2ICE, who happened to also have a radio museum in his barn behind the house. At age 15 Ed became WN2MPM and enjoyed months of crystal controlled CW on 80 and 40 meters using a home brewed one tube transmitter. The code came easy and after a few months, and a visit to the Buffalo FCC office, where he had to draw a diagram of a neutralized triode amplifier, he became W2MPM. When the ticket arrived he already had a plate modulator built and ready to go. His first ever phone contact was with the infamous W2OY on 75 meters. Since that time Ed has tried all modes and most bands available to amateurs.

He has always been on-the-air and active no matter where he was. With the Army he was I1DFD while stationed in Northern Italy. Ed spent the majority of his electronic communication career with Harris Corporation in Rochester, NY. Ed worked on high power HF transmitters, receivers, antenna couplers and, during the exciting Apollo moon flight program days on NASA's unified S-band communication system. Starting in design engineering, he also spent time in Test Engineering and Production and Quality Management positions. Upon retiring Ed started his own ISO-9000 Consulting business where he guided companies in their quest for quality program certification.

Following a lifetime love of the history of technology, Ed's latest position was that of Curator of the AWA Electronic Communication Museum in Bloomfield, New York, having taken over the position from the first ham he ever met, W2ICE. While there he was awarded the prestigious J.P. Taylor Award for the preservation of television history, The Houck Award for historical preservation and the AWA President's

award for outstanding service to the AWA. He also sits on the Board of Directors of the Hammond Museum of Radio in Guelph, Ontario, Canada. Just this month he was elected a Fellow of the Radio Club of America. An active Radio Amateur now for 52 years, and signing K2MP since 1977, Ed finds CW DX'ing his favorite activity where he has worked all ARRL entities and earned 9BDXCC. He needs just a valid Crozet QSL for top of the Honor Roll and 19 cards on 6 meters for 10BDXCC. He has DXCC on phone, CW, RTTY and 160 Meters. He has earned the ARRL Satellite Achievement award, The Mode J Club Satellite award, The ARRL 600 Club Award, VUCC, WAS on 6 and 160 meters, and WAZ. He is an Assistant Director for the ARRL Atlantic Division, an Assistance Section Manager for Western New York, a Charter Life Member of the ARRL and a member of the A1 Operator Club.

Ed is a past president of RaRa, Twice past Chmn of the RVHFG, past chairman of the Rochester Radio Repeater Association, is past Secretary/Treasurer for the RDXA and for many years was the Assistant Radio Officer for Monroe County RACES.

Ed also supported the Army MARS program as AAR2FH and won the NYS MARS Accommodation award for work in Operation Desert Storm. He is the recipient of the RDXA's KE2WK memorial award and has twice been selected as the Atlantic Division Radio Amateur of the Year for 1981 and 1999. Although Alfred Baudot turns over in his grave when he hears this, Ed is a card carrying RTTY Ranger. An avid non-contester, Ed has one 1st Place CW SS Award for WNY, gotten undoubtedly when on his way to collecting one of his eight SS Sweep Mugs.

Ed is a member of the Amateur Radio Lighthouse Society and has put a couple of lights on-the-air during the International Lighthouse Weekends. When not playing radio Ed enjoys tooling around in his C6 Corvette and probably is visiting a lighthouse somewhere.

Ed note – and not to be forgotten, listen to K5D go back to K2MP on 20cw here:
http://www.dokufunk.org/upload/kp5d_20cw_20090213.mp3

Who will be next month's bio ?????

Let's line up Bio's for the rest of the year. I would love to hear how you got started in the hobby and what else do you do in your life (if there is anything besides amateur radio). Send your bio to Dave **N2CK**, the newsletter publisher and see it in print in upcoming months.

DX Report

K2CS

Hopefully, you were able to survive the continued dismal DXing though the last few weeks, but, there's been some pretty good stuff on of late. 69 isn't where I'd like to see the SFI but that's where we're at today.

Here's the good news, the bands don't seem to care. This is just a sample of what I worked Labor Day weekend from W2CCC (G5RV at 70ft, 200watts, TS50 with an ICOM 2KL amp (that's good for 500w but I'll get into that later)).

LX/PA3GVI/P	(30m CW)
7X4AN	(20m CW)
VO2/NF6J	(20m CW)
VU2PAI(17m CW)	
H44MY	(20m CW)
VY0O	(30m CW)
5N0OCH	(17m CW)
HC2SL	(20m CW)
FM5LD	(40m CW)
E77XZ	(40m SSB)
HC2AQ	(75m SSB)

17m plays real well right around lunch time it seems, then in the late afternoon. 20m has been overloaded with Russians lately (at least from where I'm at). UA and all the variations (except for EZ which I need) are all very loud in the morning. Not a peep on 60m, 160m was also pretty dead (unlike a week ago where I was hearing EU load and clear from W2CCC on 160m).

Speaking of W2CCC, I took a direct lightning strike in February frying the mystery antenna, taking out 2 TV's, all digital converter boxes, my scanner, AM/FM stereo tuner, every power strip in the house, my MFJ keyer, TV signal amplifier (no cable up there...), my HAM IV controller box, TV rotor and controller, even blew an element right off the TV antenna!

Here are a few shots of what we all fear...





So, summer has been “rebuilding” time.

Thanks to Richard, W2FBS, the mystery antenna has been replaced (at 70ft) with a brand new G5RV, the 160m dipole has gained another 20ft and the K2CS G5RV is back up to it’s normal height.

As for the “limited power” from the amp, I purchased a MFJ 962c from an estate sale a few weeks back, got it all hooked up at W2CCC and guess what? Several positions in the rotary inductor switch were totally fried. Had a feeling, have a MFJ 962B here (purchased after W2OMV departed us) and Bill ran a few mismatches himself. At least one of those contacts is gone... never fixed it though, 100w doesn’t seem to affect it too much. Well, 500 SOLID STATE watts are very picky...

The A and D positions are gone, the remainder are severely stressed so I was only able to feed it 10w input from the TS50. One exception though, 75m phone took full power so cranked out 500+ watts, broke that HC2 pileup with one call, guy said I was the loudest thing on the band (guess that G5RV works, huh?).

Still get a kick out of “power” having never really used it (except at K2NNY, right?). Can’t wait to replace that switch and get 500w out on 160m, that’ll be fun!

I think the biggest event of the summer was the acceptance of the 7O1YGF operation from 2000. I’ve worked Yemen 3 times and none have counted until now. So, only 7 remain (FR/G, FT5W, FT5Z, P5, S2, VK9x and EZ).

Easy to remember that Yemen QSO, worked them on my birthday. I’ve confirmed them thru LOTW but still wanted the card. The CW manager got me one in a week (from Germany, 2 green stamps), still awaiting the SSB one.

Remember, contest season is upon us, get ready to submit those scores, ALWAYS mention RDXA in your affiliated club scores and who cares how the propagation is, there’s still plenty to work!

IN THE (K2CS) LOG (non contest)

ZK2V	(17m, 30m CW)
CT1DVV	(10m SSB)
KP2BH	(6m SSB)
P43A	(6m SSB)
PJ2BVU	(6m SSB)
FJ5DX	(6m SSB)
YV5NWG	(6m SSB)
J39BS	(6m CW)
5J0BV	(60m SSB)
3D2YA	(17m CW)
VK9NI	(20m CW)
7P8YI	(40m CW)
FJ/VE3EY	(17m CW)
5N00CH	(30m CW)
KG4NL	(20m, 30m, 40m CW)
JY5CC	(40m SSB)
CT8/DL7JAN	(40m CW)
SV9/DL6FBL	(40m SSB)
LU2FCB	(40m SSB)

See you in the pileups.

Best DX es 73, Chris, K2CS : Atlantic Division DXAC

Contest Calendar

Mark these dates on your calendar:

September 26-27 - CQWW RTTY
 October 17 - New York State QSO Party
 October 24-25 - CQWW Phone
 November 7-8 - ARRL SS CW
 November 21-22 - ARRL SS Phone
 November 28-29 - CQWW CW
 December 5-6 - ARRL 160 CW
 December 12-13 - ARRL 10M

Remember to put your scores on the RDXA grid and good luck to all.

Propagation 11 years ago

AD5Q's notes
from Cycle 22

September 1998 Forecast Flux Range 115 - 177

September is a month of radical improvement in high band conditions. The ionosphere is cooling off from the overheated conditions of summer, bringing higher daytime MUFs. Recent advances in solar activity also mean higher MUFs, and set the stage for our first great fall season of the new cycle. 10 Meters is opening up big time. It's time to kick the CB'ers off the CW band, or at least get 'em to move above 28.3 and pay their 10-10 dues.

The 10 Meter DX season runs from October through about March with reliable openings to Europe almost daily (except in geostorms). Some parts of the world will remain difficult to reach on 10: those involving high latitude paths over the pole. In winter this path is in darkness. Sunset at the north pole is later this month, and the northern darkness will expand throughout the fall. Thus, polar daypaths begin to close just as 10 is opening up. Opportunities to work these paths are limited, and are at their best early in the fall while most of the Arctic still receives daily exposure to sunlight. For this reason, I have always felt that October was the best month for worldwide propagation on 10. To catch the openings at high latitude, get on the band shortly after sunrise - or watch for polar signals as the band closes in the evening.

The 10 Meter season is not at peak as I write this because it is still September - late summer. Summer is the WORST season for 10 Meter work - even a high solar flux doesn't help much. However, the transition from these summer doldrums to spectacular fall conditions in October is very dramatic and occurs mainly in September.

15 Meters has already returned and will continue to improve. The fluxes are high enough now that polar paths should not be a problem. The fall season on 15 is not as interesting as the peak season in late spring, because the spring season involves paths that span both day and night. Nighttime MUFs have begun their decline that will continue until January. 15 does NOT stay open late in the fall, so DX is workable primarily over daytime paths just as it is on 10. Night paths in the southern hemisphere do open, so 15 should be watched for long path opportunities which many DXers are unaware of.

20 is still open all night, so excellent conditions should continue through October. The Antarctic paths are open again, and daily long path openings

to southern Asia are back. Worldwide DXing on 20 is almost too easy, but lowband season approaches with declining QRN levels. <http://www.qth.com/ad5q/>

Forecast of Solar and Geomagnetic Activity

09 September - 05 October 2009

Solar activity is expected to be very low.

No proton events are expected at geosynchronous orbit.

The greater than 2 MeV electron flux at geosynchronous orbit is expected to be at normal to moderate flux levels during the period.

Geomagnetic field activity is expected to be mostly quiet, with isolated-unsettled levels during 09 - 10 September due to a weak CH SS. Quiet levels are expected during 11 - 14 September. Quiet to unsettled conditions, with isolated active levels are expected during 15 - 17 September due to a CH HSS. Predominantly quiet levels are expected during 18 - 25 September. Quiet to unsettled conditions, with isolated active levels are expected on 26 September due to a CH HSS. Activity will decrease to predominantly quiet levels during 27 September - 05 October.

More at: <http://www.sec.noaa.gov/radio/>

Upcoming Hamfests:

26 Sep 2009 The 34th Annual Elmira International HamFest/ComputerFest sponsored by the Amateur Radio Association of the Southern Tier (ARAST), located at the Chemung County Fairgrounds on Central Avenue in Horseheads NY. Go to [ARAST](#) for more details. Talk-In: 147.360+ & 146.700- (no tones) Contact: Elliott Blauvelt, N2OJM, c/o 2009 HamFest, Box 614, Horseheads, NY 14845-0614. Email: 2009HamFest@ARAST.org

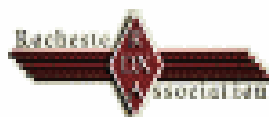
4 Oct 2009 Western New York Section Convention (Greater Buffalo Hamfest) sponsored by the Lancaster Amateur Radio Club, located at the Ismailia Shrine Center, 1600 Southwestern Blvd, in West Seneca NY. Go to [Buffalo Hamfest](#) for more details. Talk-In: 147.255 (PL 107.2). Contact: Luke Calianno, N2GDU, 1105 Ransom Road, Lancaster, NY 14086. Email: luke48@gmail.com

2009 New York QSO Party

Phone - CW - RTTY/Digital
Sponsored by the

Rochester DX Association, Inc.

www.NYQSP.org



DATE: Saturday, Oct. 17, 2009 – 1800 UTC thru Oct. 18, 0600 UTC - 12 Hours
(Third Saturday in October)

OBJECT: Stations outside of New York State work as many NY stations in as many NY counties as possible. Stations in New York State may work everyone. Multiple bands and modes.

EXCHANGE:

- NY stations send Signal Report and County (using the 3 character abbreviations listed below).
- Stations outside of NY send Signal Report and State, Canadian Province or "DX".

QSO POINTS:

- Each complete non-duplicate Phone contact is worth 1 point per band.
- Each complete non-duplicate CW contact is worth 2 points per band.
- Each complete non-duplicate RTTY (or other digital mode) contact is worth 3 points per band.

Note: You may contact each station once on each band and mode. (These maximum contacts per band, i.e. Phone, CW, and RTTY/Digital - one QSO each mode) All RTTY/Digital considered as the same mode. Do not remove duplicates from log. No partial contact credit.

MULTIPLIERS:

NY Stations

- Count U.S. states (50), NY Counties (62) and Canadian Provinces (9): MAR, NL, QC, ON, MB, SK, AB, BC, NT (Northern Territories, Yukon, Nunavut Territories)

Maximum of 121 multipliers

Note: NY stations must log all NY contacts with their 3-character county abbreviation. (Use the abbreviations list below) NY stations log States with the commonly accepted Postal Service 2 letter abbreviation (State or Province), and "DX" for all stations outside of the U.S. and Canada. The first valid NY County logged will count as the multiplier for NY.

Non-NY Stations

Count NY counties for a maximum of 62 multipliers
(Use only the abbreviations listed below)

Albany	ALB	Franklin	FRA	Oneida	ONE	Schuyler	SCU
Allegheny	ALL	Fulton	FUL	Onondaga	ONO	Seneca	SEN
Bronx	BRX	Genesee	GEN	Ontario	ONT	St. Lawrence	STL
Broome	BRM	Greene	GRE	Oranget	ORA	Storben	STE
Cattaraugus	CAT	Hamilton	HAM	Orleans	ORL	Suffolk	SUF
Cayuga	CAY	Herkimer	HER	Oswego	OSW	Sullivan	SUL
Chautauque	CHA	Jefferson	JEF	Otsego	OTS	Tioga	TIO
Chemung	CHE	Kings	KIN	Putnam	PUT	Tompkins	TOM
Chenango	CGO	Lewis	LEW	Queens	QUE	Ulster	ULS
Clinton	CLI	Livingston	LIV	Rensselaer	REN	Warren	WAR
Columbia	COL	Madison	MAD	Rockland	ROC	Washington	WAS
Cortland	COR	Monroe	MON	Richmond	RIC	Wayne	WAY
Delaware	DEL	Montgomery	MTG	Saratoga	SAR	Westchester	WES
Dutchess	DUT	Nassau	NAS	Schenectady	SCH	Wyoming	WYO
Erie	ERI	New York	NEW	Schoharie	SCO	Yates	YAT
Essex	ESS	Niagara	NIA				

SCORE: The total score is the total number of QSO points multiplied by the total number of multipliers. (NY= 121, Non-NY= 62 maximum) Details below.

FREQUENCIES (suggested) & MODES:

- Phone 1.870, 3.825, 7.200, 14.290, 21.350, 28.400, 6m, 2m and higher
- CW 1.820, 3.550, 7.050, 14.050, 21.050, 28.050, 6m, 2m and higher
- RTTY or other Digital modes (PSK, Olivia, etc.), use the ARRL Band Plan

CLASS ENTRY:

Class (select one)

- Single Operator – One person completes all contacts and logging functions
- Multi-Single – Multiple operators with only a single transmitted signal at a time
- Multi-Multi – Multiple operators, multiple transmitters
- School – A recognized educational institution, operators consisting of students, faculty, staff and alumni.
- Mobile – Single or multiple operator(s). With each County change the station may again make three mode contacts per band. Mobile class should announce Call Sign and County.
Exampler OQ NYQP W2RDX Monroe County

POWER CLASS:

Class (select one)

- High Power – greater than 100 watts output
- Low Power – greater than 5 and up to 100 watts output
- QRP – up to 5 watts output

MODES:

- CW only
- Phone only
- Digital only
- Mixed mode (any combination)

SCORING:

NY Stations

- Number of total QSO points times number of multipliers. (121 maximum)

- Mobiles Score: QSO points (all counties operated) times the number of multipliers. (121 maximum)
- Note: DX countries worked count for QSO points, but not as multipliers
Non-NY Stations
- Number of total QSO points times number of multipliers. (62 maximum)

MISCELLANEOUS:

- Mobile class sends only one county per exchange.
- New York stations that change counties are considered to be a new station and may be contacted again for point and multiplier credit.
- Entries with incomplete or improperly logged QSO's will be rejected.

LOG SUBMISSIONS: All logs must be submitted in Cabrillo format via email attachment with the subject line as below. Cabrillo files must adhere to the column format shown on the NYQP web page. No zipped files. Check logs gladly accepted.

Subject Line: **YourCall** (example: W2RDX)

Attachment: **YourCall.log** (example: W2RDX.log)

All logs must be received within 14 days of the end of the NY QSO Party.

Send logs to: **Logs@NYQP.org**

Paper Logs: Use this web form to manually enter log data to produce a Cabrillo file and submit it to the NYQP. These forms are designed for contesters who used paper logging or logging software that does not produce a Cabrillo file. Web forms are located at <http://www.hsh.net/cabforms/>

AWARDS: Award Certificates will be presented for the following:

- Certificates will be awarded to top scorers in each category from each New York County, State, Canadian Province and DXCC country.
- Special awards may be awarded at the discretion of the NY QSO Party Committee.
- Plaques will be awarded in various categories. See the current list of available plaques and sponsors on the NYQP web page.

All award winners must have a minimum of 50 contacts

LOGGING SOFTWARE: Go to www.NYQP.org and choose NY QSO Party for download selections. These selections have been updated for the NYQP.

AWARD SPONSORS: Plaque sponsorship is \$40 (DX destination is \$50). If you or your club would like to sponsor a NYQP Plaque, Please contact us at Sponsors@NYQP.org. Available plaques are listed at www.NYQP.org. Plaques can be for a top category score, memorial, etc. We can assist you in creating a special plaque.

All decisions of the contest organizers are final.

Without the efforts of these dedicated Amateurs, the NY QSO Party would not be possible. Our thanks go to:

Paul, K2DB/K2NNY
NYQP Coordinator

Rick, W1TY/W2RTY
NYQP Coordinator

Ken, N2ZN
Bill, W2ATV
Doug, N2BBG
Scott, K2ZS

Irv, AF2K
Bob, W2KKZ
Vic, K1PY

Carey, K2RNY
Bob, W2YQH
Paul, W2ABD

Ed, K2MP
Mike, W2TB
Tom, N2CU
RDXA Members

ROCHESTER DX ASSOCIATION

W2RDX

rdxa.com

This Bulletin is the official organ of the Rochester DX Association and is published monthly, September through June. Email your articles, tidbits, ham ads, etc. to Dave, N2CK at the addresses below by the second Tuesday of the month for inclusion in that month's issue.

All those with an interest in amateur radio and DXing and contesting are cordially invited to any meeting and to join RDXA. Meetings are held at 19:30 local time on the 3rd Tuesday of each month, September through June.

President-----Paul Macanos – K2DB/k2db@k2db.org

Vice President-----Paul Kolacki K2FX/
usafpilot@rochester.rr.com

Treasurer-----Irv Goodman – AF2K/af2k@juno.com

Secretary -----Carey Magee – K2RNY/k2rny@frontiernet.net

Board of Directors

Lloyd Caves – N2PU -----n2pu@rochester.rr.com

Doug Stewart – N2BEG-----stewarts@rochester.rr.com

Lynn Bisha – W2BSN -----lbisha@rochester.rr.com

Chris Shalvoy – K2CS-----K2CS/chris@k2cs.net

Appointed Positions

DX Chairman ----- Chris Shalvoy, K2CS

Packet Cluster Sys Op ----- Bob Hunter, NG2P

Webmaster ----- Scott Hoag, K2ZS

Contest Chairman ----- Ken Boasi , N2ZN

Membership Chairman -----Carey Magee, K2RNY

Newsletter Editor----- Dave Wright, N2CK/N2CK@arrl.net

NG2P Packet Cluster -----144.910 MHz

-----Telnet: ng2p.ham-radio-op.net / Port 7300

Membership Dues can be sent to:

Regular membership - \$20.00

Family Membership - \$5.00

Full Time Student - \$10.00

Carey Magee
69 Fairview Crescent
Rochester, NY 14617

Any other correspondence to:
Irv Goodman

Professional Home Inspection



Paul Mackanos – K2DB

92 Schilling Lane

Rochester, NY 14618



800.822.7579

585.223.4230

CARLETTA REALTY

Mike Carletta
Principal Broker

30 Emerald Point
Rochester, NY 14624

585 820 5335

mcarlett@rochester.rr.com
Notary Public

K201

*The highest compliment our clients can give is
the referral of their friends and family.*

PAUL I. SNYDER

SNYDER AND SNYDER, LLP
ATTORNEYS

183 EAST MAIN STREET, SUITE 1024
ROCHESTER, NY 14604-1681

TEL: (585) 546-7258

FAX: (585) 546-8332

EMAIL: PSNYDER@FRONTIERNET.NET