

ROCHESTER

DX

ASSOCIATION,
INC.

rdxa.com



ROCHESTER DX ASSOCIATION, INC NEWSLETTER 1947-2007 • 60 YEARS OF DX IN WNY FEBRUARY 2010

RDXA General Membership Meeting

February 16th 7:30 PM

This month's program:

Have you ever thought about adding a tower to your station?

This month, Paul, K2FX will discuss the steps necessary to plan and erect a tower.

Media room, right next to the EOC operations center.

1190 Scottsville Road

Exit 17 (Route 383 South) off 390

Media Room

Upcoming Programs

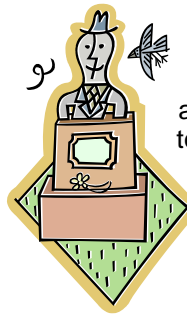
K2FX

Mar: Program on Clusters and Filtering

April: W2FU on Green Heron Products

May: Field Day

June: More Field Day, Election of Officers



The Podium

Paul Mackanos

Well, here it is, the middle of February already, and we are having some really tough winter weather. This is the best time to get those antennas up, why wait until a warm sunny day? Everyone knows that an antenna that is put up in nasty weather will STAY up for a longer time. :-)

I am taking a slight break from both babysitting duty and playing in the CQ WPX RTTY contest. I don't know if you had any idea about the recent solar event, but the higher bands have been wide open the last couple of days. I just logged into N1MM and checked WWV on the cluster, it is at 96 (highest I have seen in YEARS) and 15 meters says there are 183 QSO's and 116 available mults that I have not worked yet, and I was on 15 meters most of yesterday. Let's all pray to the DX gods that it stays that way.

This month's program should be a real goodie. Paul K2FX is going to do a program about putting up towers, what has to be done, pitfalls, etc. If you are thinking of installing one, or are interested in the process, come on down to the meeting and have a look, I am sure it will be worth your time.

Many members have asked about starting up an RDXA discussion net or get together on 2 meter FM, in order to stay informed about what is going on. Ken's (N2ZN) presentation about terrain analysis really lit a flame for a bunch of us, and sparked the inquiry. Let us know your thoughts on this, we will discuss it at the meeting. For now, get on the air and most of all " HAVE FUN "

73 de Paul K2DB

Who will be next month's bio ??????

I would love to line up Bio's for the rest of the year. I am sure the rest of the club would love to learn how you got started in the hobby and what else do you do in your life (if there is anything besides amateur radio). Send your bio to Dave N2CK, the newsletter publisher and see it in print in upcoming months.

Contesting Tips

K2CS

By the time you read this, the brunt of the contest season will be done but a few, enjoyable and effortless ones still remain.

The ARRL DX SSB and WPX (SSB and CW) contests are held between now and Memorial Day and offer first time or "retired" contesters a great opportunity to make a few contacts.

The ARRL DX SSB contest will be held the first weekend of March (6 & 7). The beauty of this event is DX stations have to work the USA for points. DX to DX contacts don't count so you're the "multiplier"!

Even with a modest station, you can get on and work many stations and remember, they need YOU.

The WPX contests are held the last weekend in March (27 & 28 - SSB) and the last weekend in May (29 & 30 - CW).

Here, callsign prefixes count for the mults (regardless of the country) so even if you work only stateside stations, you still can add up quite a score.

To assist you in planning your operating strategies, I've assembled a few pointers that I've used throughout the last 18 years I've contested.

First and foremost **KNOW PROPAGATION**.

This is the most important thing in my opinion. I don't care how tall your antennas are or how big your amp is, if you're not on 40m at 1000z calling VK's and ZL's, they probably won't make your log on that band.

If having participated in that particular contest the year before, review your logs and see who you worked and when.

Stay on an open band as long as you can, even if not working "new ones", those 200 LU's (on 10m) will still give you points. Many larger stations are looking for "rates" and will leave when the band "dies" making it easier for us little guys.

Also, more time than not (in my 18 years of contesting), bands will be open on Saturday, we take a hit and they're dead on Sunday.

On of my many "elmers", K2FR told me not to waste time Friday nite, too many big guns and they, as you, need "everything" at that point in the contest. This is one of the few things I disagreed with him on.

Review what I said above, replace Saturday and Sunday with Friday and Saturday, get it?

I always "save" 40m until late Sunday, why? I don't have tons of power, beams or the like. Since these guys are dying for Q's right about then, they'll work with you. Earlier on in the contest, they had plenty of easier stations to copy and wouldn't give you the time of day. 80m is just opening and 20m closing, that's why 40m is where to be.

Always check bands that should be otherwise "dead", 10m at 0300z (yes, worked VP9 there, only signal but 40 over, no one calling), check 160m at the top of the hour, many

multi's don't dedicate a single station to 160m and only check for band openings at the top (and possibly) bottom of the hour.

The fancier your logging program is, the better chance of it failing, enough said there.

Don't eat "crap", drink beer or load yourself up with coffee or soda. It all shocks your system and you'll crash at some point in time. I drink plenty of water and eat raw vegetables (which make your body work to digest them, keeping you alert and awake).

Finally, the week before and right after contests provide a great opportunity to "pad" your logbook. Guys will be testing their stuff and another little "hint", if just finishing an SSB contest, check CW right afterwards. Many (like myself) tend to enjoy one mode more than others and after 48 hours of screeching, head to CW (or conversely SSB) while your station is still on.

One more thing, don't log ANYTHING you are not absolutely sure you worked!

My error rate in the 2008 CQWW SSB was 0.02%, I even got an email from CQ alerting me to a near perfect log.

"Fat fingers" and like sounding characters (especially with different dialects involved) can kill an otherwise good effort.

And remember, there is different rules pertaining to how the bad Q's penalty is assessed depending on the contest.

2008 CQWW SSB - 1st W2, 5th USA, 11th North America

(TS440sat - C3 - G5RV)

See you in the pileups.
Best DX es 73,

Chris, K2CS: Atlantic Division DXAC

Forecast of Solar and Geomagnetic Activity

10 February - 08 March 2010

Solar activity is expected to be low to moderate with a slight chance for a major flare as 1045 remains on the disk from 10-14 February. Activity levels should decrease to low to very low levels for 15-28 February but may increase to low to moderate levels for 01-08 March as old Regions 1045 and 1040 are due to return on 28 February and 01 March, respectively.

No proton events are expected at geosynchronous orbit.

The greater than 2 MeV electron flux at geosynchronous orbit is expected to be at normal levels through most of the period.

The geomagnetic field is expected to be unsettled with a chance for active periods for 10-14 February as a series of CME's associated with activity from Region 1045 may arrive and impact the Earth during this time frame. In addition there is a slight chance for minor storm periods on 12 February due to the expected arrival of the halo CME associated with the M6 event mentioned previously. Quiet conditions are expected for 15 February, followed by

quiet to unsettled levels due to a recurrent coronal hole on 16-17 February. Quiet levels should return and prevail for 18-28 February, followed by an increase to mostly unsettled levels on 01-02 March due to another recurrent coronal hole. Quiet levels should return for the remainder of the period from 03-08 March.

More at: <http://www.sec.noaa.gov/radio/>

Mystery picture

W2LB



Any guess on what this is? Send your answers to Larry, W2LB.

Combined RDXA/RVHF Awards Banquet

The combined awards banquet will be held on April 17th at Nick's Sea Breeze Inn. Mark the date on your calendar (now would be good!) and plan to attend. Additional details will be forthcoming.

Hamfest calendar for 2010

K2DB

Elmira Winterfest Saturday, 27 February 2010
Lancaster Winter Hamfest Sunday, 14 March 2010
RAWNY Flea Market (Last year Tuesday, 14 April 2009)
Newark Hamfest 17 April 2010
Dayton Hamvention Friday/Sunday 14-16 May 2010
Rochester Hamfest Saturday, 5 June 2010
Butler Hamfest (PA) Sunday June 6, 2010
PROS Hamfest – Chaffee (Last year Saturday, 13 June 2009)
GRAM (Batavia / Alexander) Hamfest (Last year Saturday, 1 August 2009)
Lancaster Harvest Hamfest (Last year - 5 October 2008)
Elmira Hamfest Saturday, 25 September 2010

RDXA Apparel Update

K1PY

Ran across the RDXA apparel box, and thought I'd update the membership of the few items still available.

Green golf shirt, RDXA patch, with pocket, XL \$17
Green baseball caps (2), RDXA patch \$13.50 each

RDXA Yellow FD National Champion T-shirt, L \$12
Reserve one for yourself as a Holiday gift!

Will have in my car at meetings, etc. Checks payable to RDXA acceptable.

Upcoming DX Operations:

Feb 9-25, 2010 : French Polynesia: [TX4T](#)
Feb 10-23, 2010 : Grenada: [J38XX](#)
Feb 10-23, 2010 : Senegal: [6V7V](#)
Feb 10-Mar 2, 2010 : Belize: [V31RI](#)
Feb 11-May 11, 2010 : Kenya: [5Z4](#)
Feb 11-May 11, 2010 : Malawi:
Feb 12-25, 2010 : Kenya: [5Z0H](#)
Feb 12-Mar 26, 2010 : South Shetland Is: [XR9JA](#)
Feb 13-27, 2010 : Papua New Guinea: [P29VIM](#)
Feb 17-Mar 10, 2010 : Tokelau: ZK3
Feb 18-26, 2010 : Morocco: CN2MR
Feb 18-Mar 1, 2010 : Senegal: 6V7T
Feb 18-Mar 15, 2010 : St Vincent: J88DR
Feb 19-23, 2010 : Cambodia: XU7KOH
Feb 20-27, 2010 : Christmas Is: [VK9X](#)
Feb 21-25, 2010 : Bangladesh: S2
Feb 22-Mar 3, 2010 : Brunei: V88
Feb 22-Mar 6, 2010 : Burundi: 9U1VO
Feb 23-Mar 5, 2010 : Maldives: 8Q7JK
Feb 24-Mar 8, 2010 : Guadeloupe: TO2T
Feb 24-Mar 17, 2010 : Dodecanese: SV5
Feb 25-Mar 1, 2010 : Guam: KH2
Feb 26-Mar 26, 2010 : Surinam: PZ5LP
Feb 28-Mar 13, 2010 : Montserrat: VP2M

Information courtesy of:

<http://www.ng3k.com/Misc/adxo.html>

Global Overlay Mapping program

N2CK

A post to the DX-News reflector earlier this month caught my eye. Someone wrote asking about the Radio Amateurs World Atlas, published by Flying Horse and wondered if such a tool existed. This site was recommended by another ham for the Global Overlay Mapping program: <http://www.mapability.com/ei8ic/> Scroll a little over halfway down. Here's some additional information from their web site:

GOM, the Global Overlay Mapper, is a suite of 1 World Map, 8 Continental Maps and 29 Sub-Continental Maps of varying sizes. Packed full of features, the GOM is an important new tool for all aspects of Amateur Radio throughout the world. More than just a static map, GOM combines the 12 different overlays with an easy-to-use navigation system that can select and load a map from a single click. In addition, every map has Real-Time Mouse Tracking, that displays continuous Positional and Grid-Locator information on the Status Bar, plus instant Beam Headings and Distance Display, customized to your Home location.

ROCHESTER DX ASSOCIATION

W2RDX

rdxa.com

This Bulletin is the official organ of the Rochester DX Association and is published monthly, September through June. Email your articles, tidbits, ham ads, etc. to Dave, N2CK at the addresses below by the second Tuesday of the month for inclusion in that month's issue.

All those with an interest in amateur radio and DXing and contesting are cordially invited to any meeting and to join RDXA. Meetings are held at 19:30 local time on the 3rd Tuesday of each month, September through June.

President-----Paul Macanos – K2DB/k2db@k2db.org

Vice President-----Paul Kolacki K2FX/
usafpilot@rochester.rr.com

Treasurer-----Irv Goodman – AF2K/af2k@juno.com

Secretary -----Carey Magee – K2RNY/k2rny@frontiernet.net

Board of Directors

Lloyd Caves – N2PU ----- n2pu@rochester.rr.com

Doug Stewart – N2BEG -----doug.stewart@ITCMEMS.com

Lynn Bisha – W2BSN -----lbisha@rochester.rr.com

Chris Shalvoy – K2CS-----K2CS/chris@k2cs.net

Appointed Positions

DX Chairman ----- Chris Shalvoy, K2CS

Packet Cluster Sys Op ----- Bob Hunter, NG2P

Webmaster ----- Scott Hoag, K2ZS

Contest Chairman ----- Ken Boasi , N2ZN

Membership Chairman ----- Carey Magee, K2RNY

Newsletter Editor----- Dave Wright, N2CK/N2CK@arrl.net

NG2P Packet Cluster -----144.910 MHz

-----Telnet: ng2p.ham-radio-op.net / Port 7300

Membership Dues can be sent to:

Regular membership - \$20.00

Family Membership - \$5.00

Full Time Student - \$10.00

Carey Magee

Professional Home Inspection



Paul Mackanos – K2DB

20 Sumac Way

Fairport, NY 14450



800.822.7579

585.223.4230

69 Fairview Crescent

Rochester, NY 14617

**Any other correspondence to:
Irv Goodman**



*The highest compliment our clients can give is
the referral of their friends and family.*

PAUL I. SNYDER

SNYDER AND SNYDER, LLP
ATTORNEYS

183 EAST MAIN STREET, SUITE 1024
ROCHESTER, NY 14604-1681

TEL: (585) 546-7258

FAX: (585) 546-8332

EMAIL: PSNYDER@FRONTIERNET.NET